

RIVERS PROJECT OFFICE ENVIRONMENTAL STEWARDSHIP

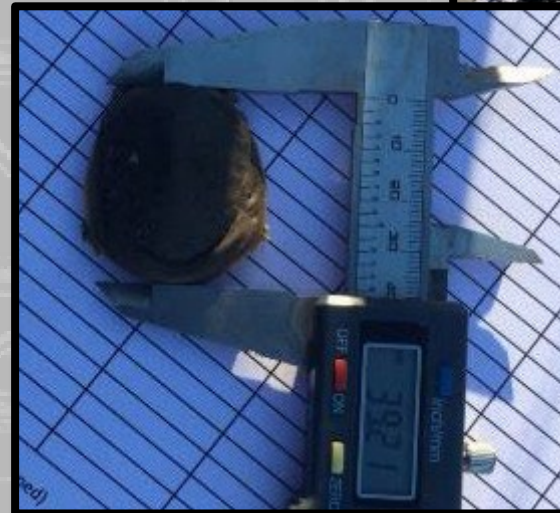
Robert Cosgriff
Environmental Stewardship Manager
MVD/MVS/RPO - ES
14 September 2023



US Army Corps
of Engineers®

OUTLINE

- ES Mission
- The Rivers Project
- Task Organization
- Land Management Program
 - Management Tools
- Focus: Floodplain Forests
- Focus: Wetlands/Prairies
- Species of Concern
- Wildlife Management



US Army Corps
of Engineers®

RPO MISSION

- **Navigation**
 - 4 Locks and Dams
- **Service and Support**
 - Dredging (Dredge Potter)
 - Maintenance Crew
 - River Surveying
- **Natural Resource Management**
 - Recreation
 - Education and Outreach
 - Environmental Stewardship



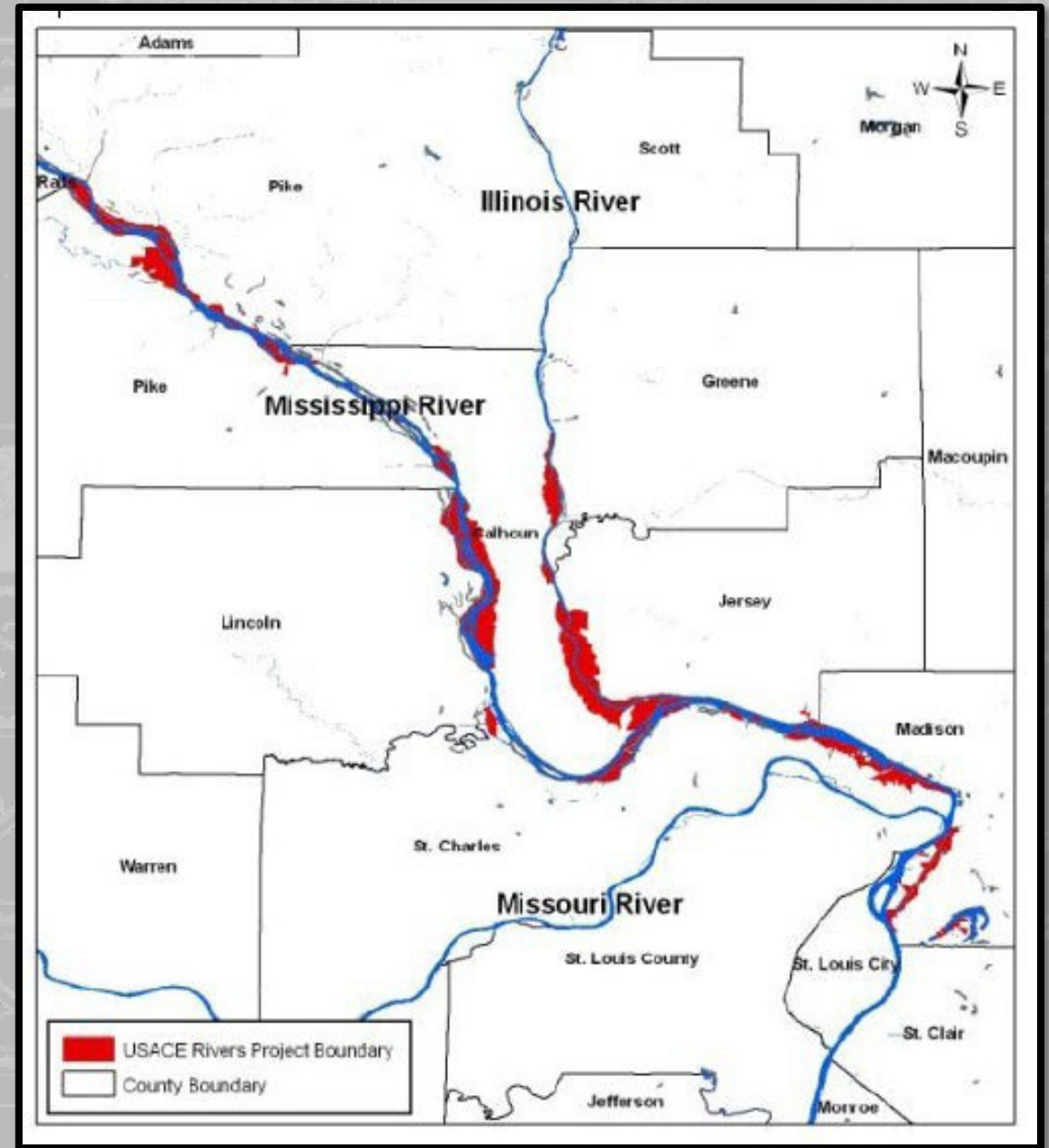
US Army Corps
of Engineers®

THE RIVERS PROJECT

- 380 miles of Mississippi and Illinois River navigation channel
- Confluence with Ohio River to Saverton, Missouri
- Lower 40 miles of Illinois River
- 211 miles of boundary
- 4 locks and dams
- A service base
- Almost 50,000 acres of public lands
- Over 100,000 acres of public waters



US Army Corps
of Engineers®



ES MISSION

The National Environmental Stewardship Program objectives are:

- To manage natural resources on Corps of Engineers administered land and water in accordance with ecosystem management principles, to ensure their continued availability*
- To provide a safe and healthful environment for project visitors.*

- Management of natural resources in the Upper Mississippi River System
- 150,000 acres of public lands and waters; 50,000 terrestrial
- **Emphasis on Federal Trust Species; migratory & T&E**
- Systemic Forest Management - 3 Corps Districts
- Floodplain Restoration through other programs
- **Partnerships for habitat management**



**US Army Corps
of Engineers®**

FOCUS AREA -FLOODPLAIN FOREST

- Around 16 identified community types

Includes:

- Swamp Shrubland
- Oak-Hickory
- Cottonwood
- Willow
- Maple/Ash/Elm
- Mixed



Silver Maple
36,000 acres



Typical Floodplain
7,000 acres



Diverse Trees
3,000 acres



US Army Corps
of Engineers®

FOCUS AREA – PRAIRIE/WETLAND MANAGEMENT

- Around 16 identified community types

Includes:

- Moist Soil (annual grassland)
- Perennial Wetland
- Wet Prairie
- Dry Prairie
- Sand Prairie
- Agriculture



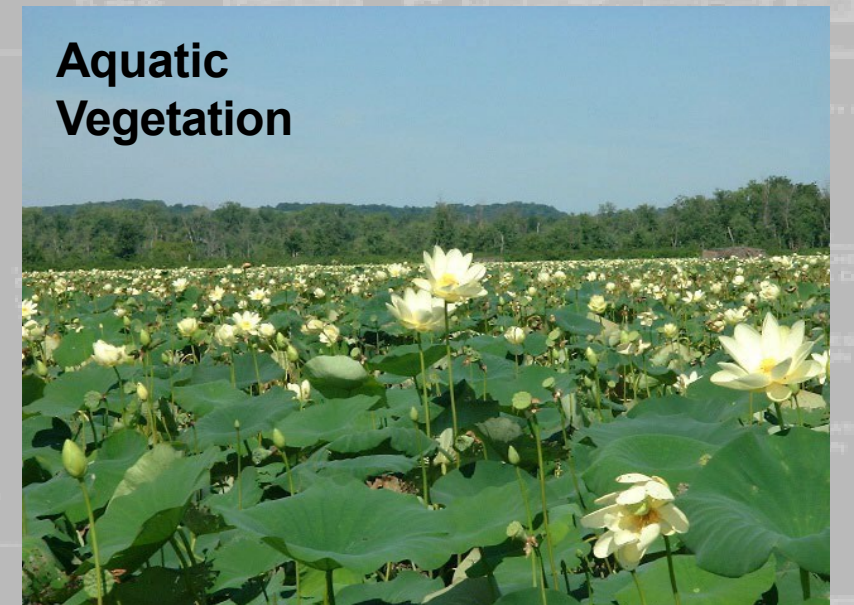
Sand Prairie



Marsh



Wet and Dry Prairie



Aquatic Vegetation



**US Army Corps
of Engineers®**

RPO MANAGEMENT



- Water level management
- Prescribed fire
 - Dormant Season
 - Growing Season
- Herbicide application
- Mowing
- Disking
- Drill and Broadcast seeding
- TSI
- Container Planting
- Plant Propagation
- Seed Harvesting



US Army Corps
of Engineers®

TOOLS TO GET US THERE

- In house labor
- Contracts
 - Tree Planting IDIQ
 - Veg. Maintenance IDIQ
 - Land Repair IDIQ
- BPAs
 - Plant Material X2
 - Seed X2
 - Hazard Tree Removal
- SCA Interns
 - Biologists
 - Work Crews
- CESUs
 - Audubon
 - NGRREC

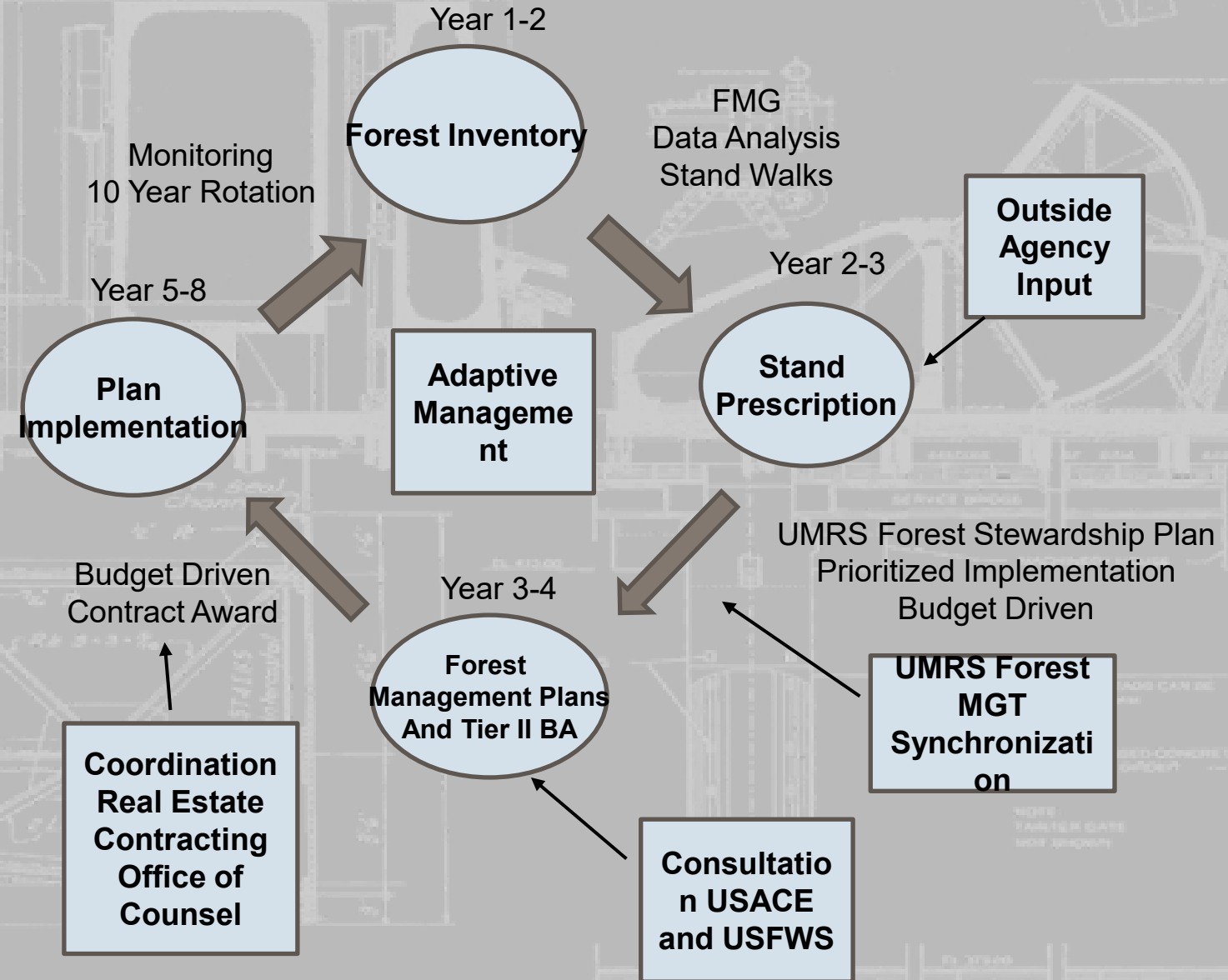


US Army Corps
of Engineers®

FOREST MGT

10 Year Planning Cycle

- Forest inventory
 - Completed upper Pool 25
 - Completed Thompson Bend
 - Completed Stump Lake ILWW
- Stand Prescription / Forest Management Plans
 - Fritz Island
 - Blackbird / Cottonwood / Willow Islands
 - Stump Lake ILWW
- Implementation
 - Pool 26 Islands
 - Gilbert Island
 - Portage Island



US Army Corps
of Engineers®

PRAIRIE/WETLAND MGT

- Draft RMBS Habitat Management Plan
- Control Structure at Teal Pond
- Maintenance of 2000 acres prairie/wetland
- Growing season burn Calumet
 - Mortland Wetland
 - Timber Ridge Wetland
- Great Rivers Pollinator Habitat Partnership
- Propagation Greenhouse construction
- Ag Leases
 - Row Crop at RMBS
 - Hay Lease American Bottoms



US Army Corps
of Engineers®

MONITORING EFFORTS

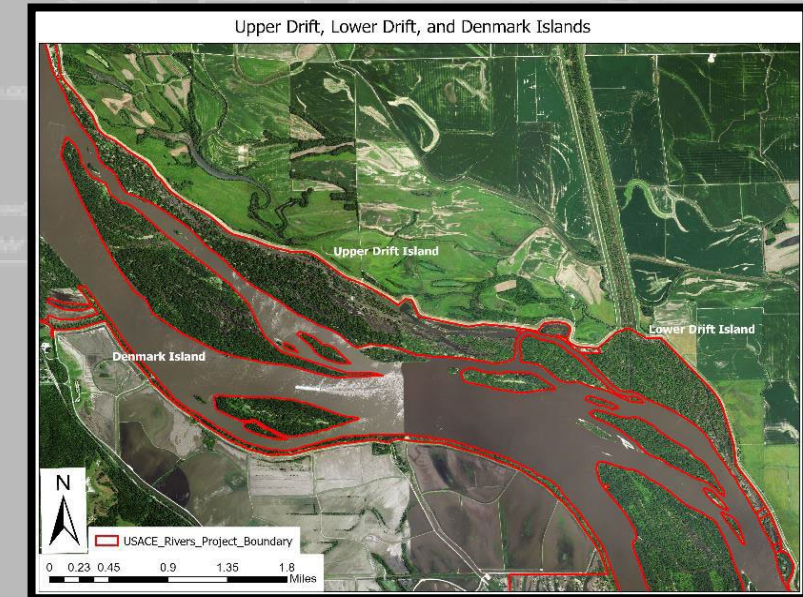
- Bat
 - Mist netting
 - Acoustic
- Avian
 - Bottomland Forest Point Count
 - Grassland
 - Waterfowl
 - Interior Least Tern
- Softshell Turtle Nesting
- Forest
 - High Intensity Forest Inventory
 - Permanent Plot Surveys
 - Reforestation Monitoring
 - Invasive Species Project
 - EAB
 - Portage Island Field Trials
- Prairie/Wetland
 - Grassland Monitoring
 - Boltonia Surveys
 - IWMM
- Pollinator Surveys
 - Standardized Protocol – Alex Morpew (MDC)
 - Xerces – Bumblebee Atlas
 - Integrated Monarch Monitoring Program
 - NGRREC Wetland Pollinator Monitoring
- SRP
 - Lake Sturgeon
 - Shorebird



US Army Corps
of Engineers®

PROGRAM SUPPORT

- UMRR
 - Ted Shanks – Reforestation Maintenance
 - Batchtown – Reforestation Maintenance
 - Clarence Cannon – Reforestation Implementation
 - Yorkinut – Planning
 - West Alton – Planning
- NESP
 - Drift/Denmark Island
 - Horse Island
 - Water Level MGT
 - Systemic Forestry
- Project Support
 - Water Control Manuals
 - RE – Outgrants / Cabins
 - Master Plan / OMP



US Army Corps
of Engineers®

ES TASK ORGANIZATION

Forest Team Lead
Forester
GS-0401-11
Brian Stoff

Forester
GS-0460-9/11
Insiyaa Ahmed

Forester
GS-0460-09
Matthew Ganden

Forester
GS-0401-07
Chad Harrison

Supervisor Wildlife
Biologist GS-0486-
12
Robert Cosgriff

Special Initiatives
Biologist
GS-0401-11
Sarah Miller

Special Initiatives
Biologist
GS-0401-05
Ashley Nelson

Wildlife Team Lead
Wildlife Biologist
GS-0486-11
Tyler Goble

Wildlife Biologist
GS-0401-09
Josh Pierce

Wildlife Biologist
GS-0404-07
Sarah Holder



US Army Corps
of Engineers®



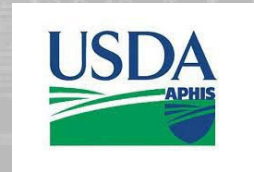
PARTNERSHIPS

Land Management

- USFWS – 6,722 acres
- IDNR – 15,281 acres
- MDC – 14,283 acres
- Coordinated management for migratory waterfowl
- USACE retained management of forest resources

Data Collection / Research / Reports

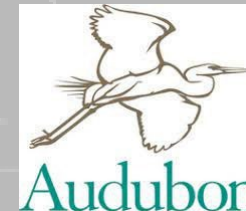
- Audubon – Avian Inventory, Avian Stewardship Plan
- NGRREC – Forest Inventory, Invasive Species Research Project, Floodplain Forest Gap Study, Inundation Study, UMRS Forest Stewardship Plan
- USGS/LTRM (USACE) – Coordinated effort to identify land management data gaps
- UMRR/NESP (USACE) – Large habitat restoration/rehabilitation projects
- SRP (USACE/TNC) – Effort to improve the management of Civil Works infrastructure for species of concern



US Army Corps
of Engineers®



Illinois
Department of
Natural
Resources



The National Great Rivers
Research & Education Center

PARTNERSHIPS CONT...



Systemic Management

- UMRS Forestry PDT
- UMRS Forest Stewardship Plan

Nuisance / Invasive Species

- USDA APHIS – Nuisance species removal, EAB detection and management
- USFS – Chestnut Blight, Dutch Elm Disease, EAB

Internships

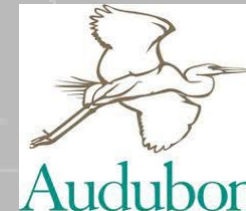
- SCA
- NGRREC



US Army Corps
of Engineers®



Illinois
Department of
Natural
Resources



The National Great Rivers
Research & Education Center

Questions?

POCs

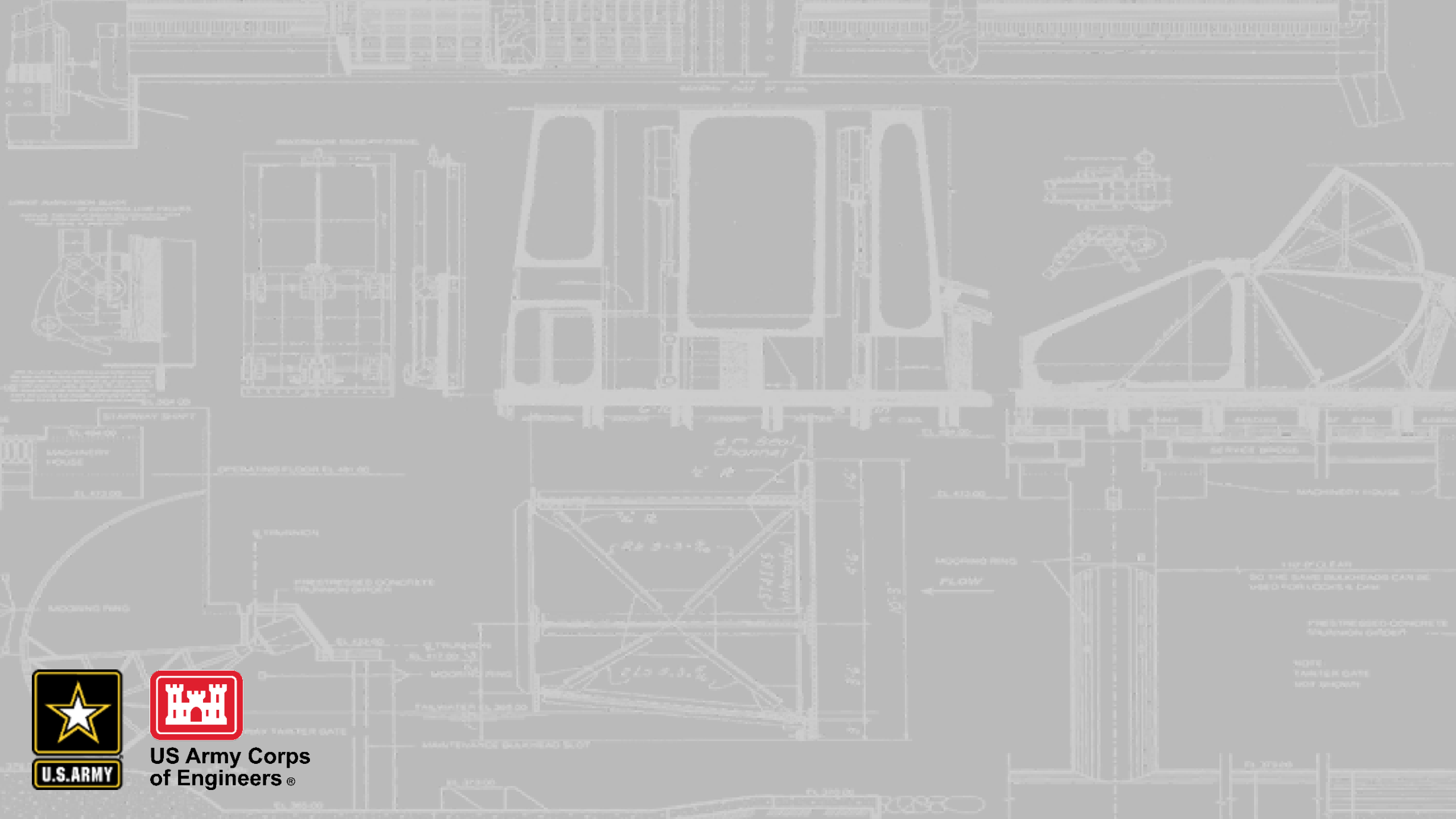
Robert Cosgriff
Environmental Stewardship Manager
618-792-5479
robert.j.Cosgriff@usace.army.mil

Brian Stoff
Lead Forester
636-288-6705
brian.w.stoff@usace.army.mil

Tyler Goble
Lead Wildlife Biologist
618-513-2439
tyler.j.goble@usace.army.mil



**US Army Corps
of Engineers®**



US Army Corps
of Engineers®